

AC Switch - disconnectors

Switch - disconnectors with high operating load capacity and a high level disconnection insulation; high reliability and safety in abnormal situations, available in different construction models, with a wide range of currents and several accessories.

series
S5|S5M|S5N

series
S6|S6N

series
CIS

According to:
IEC 60947-3
IEC 61439-2
RoHS



Testing and approvals:



The switch - disconnectors in its different series, are manufactured with high safety self-extinguishing materials, providing an excellent level of electrical insulation, low smoke emission and high resistance to electromechanical stress.

They comply with environmental requirements and undergo strict quality controls for a reliable product that meets the most demanding requirements.

They consist of a sandwich-type body containing self-cleaning blade type contacts, with pre-arc zones to ensure long term, fault-free energy transmission and coated with silver alloy for long electromechanical life. The detent mechanism provides quick and independent switching due to the accumulation of elastic potential energy, which is transmitted at high speed to the contacts for arc extinction.

Functional and ergonomic handle

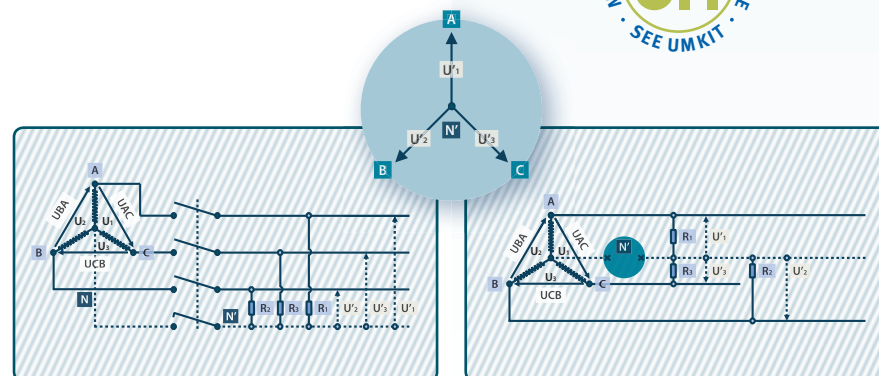
- > Good grip and excellent torque/resistance
- > Padlockable handle in **0 OFF** position (up to three locks Ø 5-8 mm)
- > Door interlock in **ON I** position
- > When lock in **0 OFF** position, door is interlocked
- > Defeatable feature in **ON I** position (with the use of a tool for maintenance operations). Handle interlock is restored when closing
- > Self-centering shaft for door handle



Neutral pole early make & late break

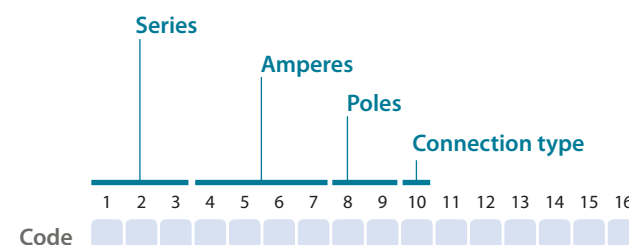
This safety feature prevents accidental overvoltage when making/breaking of loads connected between phase and neutral.

Due to the design in our 3P+N switch - disconnectors and changeover switches, the neutral contact closes before the main phases and opens later, thus ensuring this operation mode.



Range codification:

The **S5|S5M|S5N|S6|S6N** series, are identified by a code that describes their most important characteristics as described below.



series
S5



1 2 3 4 5 6
S5

Wide range of currents.
Base mounting with screws.
Switching under load up to 1000Vac (inductive and capacitive).
Breaking current up to 8 times the operational current.
Able to establish and withstand short-circuit currents up to 100kA.
External or direct handles.

series
S5M



1 2 3 4 5 6
S5M

Back to back with operating mechanism in side, arrangement to increase the number of available contacts between 6 or 8.
Base mounting with screws.
External or direct handles.

series
S5N



1 2 3 4 5 6
S5N

Back to back with operating mechanism in front, arrangement to increase the number of available contacts between 6 or 8.
Base mounting with screws.
External or direct handles.

series
S6



1 2 3 4 5 6
S6

Switch - disconnectors with housings for 2P - 3P or 3P+N.
Base mounting with screws.
External or direct handles.
Wide range of devices and accessories.

series
S6N



1 2 3 4 5 6
S6N

Back to back with operating mechanism in front, arrangement to increase the number of available contacts between 6 or 8.
Base mounting with screws.
External or direct handles.

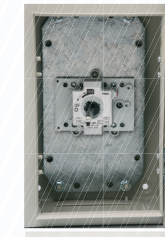
series
CIS25D



1 2 3 4 5 6 7
CIS25D

S5 polyester enclosed switch.
External padlockable handle with locking cover in ON I position.
Removing cover blocked by padlock when handle is in 0 OFF position.

series
CIS25C



1 2 3 4 5 6 7
CIS25C

S5 metal enclosed switch.
External padlockable handle with locking door in ON I position.
Door opening blocked by padlock when handle is in 0 OFF position.

series
CIS25A



1 2 3 4 5 6 7
CIS25A

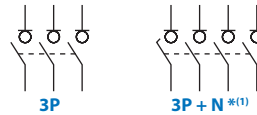
S5 polyester enclosed switch and fuse holders.
External padlockable handle with locking cover in ON I position.
Removing cover blocked by padlock when handle is in 0 OFF position.

series
CIS25F



1 2 3 4 5 6 7
CIS25F

S5 metal enclosed switch and fuse holders.
External padlockable handle with locking door in ON I position.
Door opening blocked by padlock when handle is in 0 OFF position.



S5
SSN

S5 switches 2, 3 & 4 poles (40 - 6300A) (O - I)

Manual handle

Shaft extensions

Bridging links

Auxiliary contacts

DIN rail mounting

Safety key lock device

Terminal protection

Terminal shrouds (1 unit)

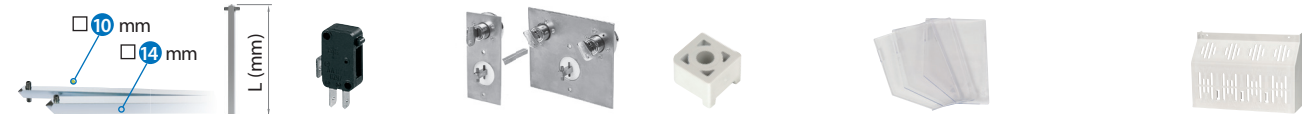
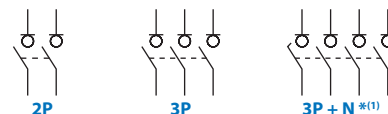
Terminal shrouds (2 units)



Amp.	Size	Connection	2 pole (2P)	3 pole (3P)	4 pole (3P + N) ^{*(1)}	External ^{*(2)}	Direct	Emergency external ^{*(2)}	Size		Type 1 & 2		Code (4 units)	1NO+1NC	2NO+2NC	Code (2 units)	Simple	Double	Code	Up	Down	Up or Down	Code	Full details in page		
			Code	Code	Code	Code	Code	Code			Code	L		Code ^{*(e1)}	Code		Code	Code ^{*(e1)}		Code ^{*(e1)}	Code	3P			3P	4P
																						Code			Code	Code
40	00		S5-00402PB0	S5-00403PB0	S5-00403NB0	DS-SA01	DS-SI01	DS-SR01	00	7	250	DS-EP04	-	D5LAU01	D5LAU02	-	DS-CAB1	DS-CEB1	-	-	-	-	-	70		
63			S5-00632PB0	S5-00633PB0	S5-00633NB0						387	DS-EP05								-	-	-	-			
80			S5-00802PB0	S5-00803PB0	S5-00803NB0																					
125	0		S5-01252PB0	S5-01253PB0	S5-01253NB0	DS-SA01	DS-SI01	DS-SR01	0	7			-	D5LAU01	D5LAU02	DS-DN01	DS-CAB1	DS-CEB1	DS-CU01	-	-	-	-	72		
125			S5-01252PS0	S5-01253PS0	S5-01253NS0											-				DS-CU02	DS-CU03	DS-CU04				
160			S5-01602PB0	S5-01603PB0	S5-01603NB0						250	DS-EP04				DS-DN01				-	-	-				
160			S5-01602PS0	S5-01603PS0	S5-01603NS0						387	DS-EP05				-				DS-CU02	DS-CU03	DS-CU04				
200			S5-02002PS0	S5-02003PS0	S5-02003NS0											-				DS-CU05	DS-CU06	DS-CU07				
250			S5-02502PD0	S5-02503PD0	S5-02503ND0											-				DS-CU05	DS-CU06	DS-CU07				
250	1		S5-02502PR0	S5-02503PR0	S5-02503NR0	DS-SA11	DS-SI11	DS-SR11	1	10	375	DS-EP14	-	D5LAU01	D5LAU02	-	DS-CA11	DS-CE11	DS-CU12	-	-	-	DS-CU11	74		
315			S5-03152PR0	S5-03153PR0	S5-03153NR0						536	DS-EP15								-	-	-	DS-CU11			
400			S5-04002PC0	S5-04003PC0	S5-04003NC0															-	-	-	-			
500	2		-	S5-05003PR0	S5-05003NR0	DS-LA21	DS-LI21	DS-LR21	2	14	345	DS-EP23	-	D5LAU01	D5LAU02	-	DS-CB21	DS-CF21	DS-CU22	-	-	-	DS-CU21	76		
630			-	S5-06303PR0	S5-06303NR0						535	DS-EP24								-	-	-				
800			-	S5-08003PC0	S5-08003NC0																					
800	3		-	S5-08003PR0	S5-08003NR0	DS-LA31	DS-LI31	DS-LR31	3	14	345	DS-EP23	-	D5LAU01	D5LAU02	-	DS-CB31	DS-CF31	-	-	-	-	DS-CU31	78		
1000			-	S5-10003PC0	S5-10003NC0						535	DS-EP24								-	-	-				
1250			-	S5-12503PC0	S5-12503NC0																					
2000			-	S5-20003PC0	S5-20003NC0						345	DS-EP23								D5LPC32	DS-AU11	DS-AU12				
											535	DS-EP24														
1000	4		-	S5-10003PS0	S5-10003NS0	DS-LA41	DS-LI41	DS-LR41	4	14			-	D5LAU01	D5LAU02	-	DS-CB41	DS-CF41	-	-	-	-	DS-CU41	80		
1250			-	S5-12503PS0	S5-12503NS0						485	DS-EP44								-	-	-				
1600			-	S5-16003PS0	S5-16003NS0						635	DS-EP45								-	-	-				
1800			-	S5-18003PS0	S5-18003NS0																					
2000	5		-	S5-20003PD0	S5-20003ND0	DS-LA41	DS-LI41	DS-LR41	5	(SSN)	-		-	D5LAU01	D5LAU02	-	DS-CB41	DS-CF41	-	-	-	-	-	82		
2000			-	S5N20003PS0	S5N20003NS0																					
2500			-	S5N25003PS0	S5N25003NS0																					
3150			-	S5N31503PS0	S5N31503NS0																					
2000	(SSN)		-	S5N20003PP0	S5N20003NP0	DS-LA41	DS-LI41	DS-LR41	5	(SSN)	-		-	D5LAU01	D5LAU02	-	DS-CB41	DS-CF41	-	-	-	-	-	84		
2500			-	S5N25003PP0	S5N25003NP0																					
3150			-	S5N31503PP0	S5N31503NP0																					
4000	6		-	S5-40003PP0	S5-40003NP0	DS-EN61 ^{*(3)}	-	-	6	-	-	-	-	DS-AU11	DS-AU12	-	-	-	-	-	-	-	86			
5000			-	S5-50003PP0	S5-50003NP0																					
6300			-	S5-63003PP0	S5-63003NP0																					

For high performance range (800Vac), please consult the corresponding full details.

^{*(P2)} To comply with the operation and electrical features, the bridging links must be assembled to the switch. Please consult.



S6

S6 switches 2, 3 & 4 poles (200 - 800A) (O - I)

Manual handle

Shaft extensions

Auxiliary contacts

Safety key lock device

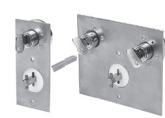
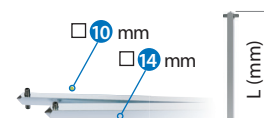
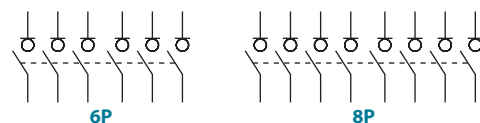
Spacers

Phase barriers

Terminal shrouds ^{*(7)}



Amp.	Size	Connection	Bipolar (2P)	3 pole (3P)	4 pole (3P + N) ^{*(1)}	External ^{*(2)}	Direct	Emergency external ^{*(2)}		Type 1 & 2		1NO+1NC	2NO+2NC	Simple	Double	(4 units)	(1 unit)	(2 units)	(3 units)				Full details in page
			Code	Code	Code	Code	Code	Code		Code	L	Code ^{*(e1)}	Code	Code	Code ^{*(e1)}	Code ^{*(e1)}	Code	Code	Code	Code	Code	Code	
200	1		S6-02002PS0	S6-02003PS0	S6-02003NS0	DS-SA11	DS-SI11	DS-SR11	10	375	DS-EP14	D5LAU01	D5LAU02	DS-CA11	DS-CE11	DR-EL11	DR-SF11	DR-SF12	DR-SF13	DR-CU11	DR-CU12	DR-CU13	88
250			S6-02502PS0	S6-02503PS0	S6-02503NS0																		
315			S6-03152PS0	S6-03153PS0	S6-03153NS0																		
400			S6-04002PD0	S6-04003PD0	S6-04003ND0																		
500	2		S6-05002PS0	S6-05003PS0	S6-05003NS0	DS-LA21	DS-LI21	DS-LR21	14	345	DS-EP23	D5LAU01	D5LAU02	DS-CB21	DS-CF21	DR-EL21	DR-SF21	DR-SF22	DR-SF23	DR-CU21	DR-CU22	DR-CU23	90
630			S6-06302PS0	S6-06303PS0	S6-06303NS0																		
800			S6-08002PD0	S6-08003PD0	S6-08003ND0																		



S6N S6 switches 6 & 8 poles (125 - 630A) (O - I)



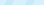






Manual handle

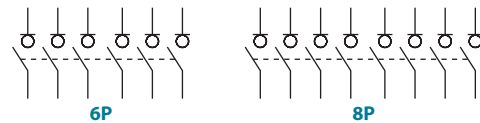
Shaft extensions ^{*(2)}

Auxiliary contacts ^{*(3)}

Safety key lock device ^{*(4)}

Full details in page

Amp.	Size	Connection	6 pole (6P)	8 pole (8P)	External ^{*(1)}	Direct	Emergency external ^{*(1)}	Size		Type 1 & 2		1NO+1NC	2NO+2NC	Simple	Double	Full details in page	
			Code	Code	Code	Code	Code			L	Code ^{*(e1)}	Code	Code	Code ^{*(e1)}	Code ^{*(e1)}		
125	1		S6N01256PS0	S6N01258PS0	DS-SA11	DS-SI11	DS-SR11	1	10	375	DS-EP14	D5LAU01	D5LAU02	DS-CA11	DS-CE11	102	
160			S6N01606PS0	S6N01608PS0							536						DS-EP15
200			S6N02006PS0	S6N02008PS0						DS-EP23							DS-EP24
250			S6N02506PS0	S6N02508PS0													
315			S6N03156PS0	S6N03158PS0													
400	2		S6N04006PD0	S6N04008PD0	DS-LA21	DS-LI21	DS-LR21	2	14	345	DS-EP23	D5LAU01	D5LAU02	DS-CB21	DS-CF21	104	
500			S6N05006PR0	S6N05008PR0						535	DS-EP24						
630			S6N06306PR0	S6N06308PR0													



S5M S5N S5 switches 6 & 8 poles (125 - 2000A) (O - I)

Manual handle

Auxiliary contacts ^{*(3)}

Safety key lock device ^{*(4)}

Phase barriers ^{*(5)}

Terminal protection ^{*(5)}

Terminal shrouds ^{*(5)} (1 unit)

Terminal shrouds ^{*(5)} (2 units)

Full details in page

Amp.	Size	Connection	6 pole (6P)	8 pole (8P)	External ^{*(1)}	Direct	Emergency external ^{*(1)}	Size	Auxiliary contacts ^{*(3)}		Safety key lock device ^{*(4)}		Phase barriers ^{*(5)}		Terminal protection ^{*(5)}	Terminal shrouds ^{*(5)} (1 unit)			Terminal shrouds ^{*(5)} (2 units)	
			Code	Code					1NO+1NC	2NO+2NC	Simple	Double	6P	8P		Up	Down	Up or Down		
125	0		S5M01256PS0	S5M01258PS0	DS-LA01	DS-SI01	DS-LR01	0	DS-AU11	DS-AU12	DS-CAB1	DS-CEB1	DS-PB01	DS-PB02	-	DS-CU02	DS-CU03	DS-CU04	-	92
160			S5M01606PS0	S5M01608PS0												DS-CU02	DS-CU03	DS-CU04		
200			S5M02006PS0	S5M02008PS0												DS-CU05	DS-CU06	DS-CU07		
250	1		S5M02506PR0	S5M02508PR0	DS-LA12	DS-LI12	DS-LR12	1	DS-AU11	DS-AU12	DS-CB12	DS-CF11	DS-PB12	DS-PB11	DS-CU12	-	-	-	DS-CU11	94
315			S5M03156PR0	S5M03158PR0												-	-	-		
400			S5M04006PC0	S5M04008PC0												-	-	-		
500	2		S5M05006PR0	S5M05008PR0	DS-LA22	DS-LI22	DS-LR22	2	DS-AU11	DS-AU12	DS-CB21	DS-CF21	DS-PB22	DS-PB21	-	-	-	-	DS-CU21	96
630			S5M06306PR0	S5M06308PR0												-	-	-		
800	3		S5M08006PR0	S5M08008PR0	DS-LA41	DS-LI41	DS-LR41	3	DS-AU11	DS-AU12	DS-CB41	DS-CF41	DS-PB32	DS-PB31	-	-	-	-	DS-CU31	98
1000			S5M10006PC0	S5M10008PC0												-	-	-		
1250	4 (S5N)		S5N12506PS0	S5N12508PS0	DS-LA41	DS-LI41	DS-LR41	4 (S5N)	D5LAU01	D5LAU02	DS-CB41	DS-CF41	-	-	-	-	-	-	-	100
1600			S5N16006PS0	S5N16008PS0												-	-	-		
1800			S5N18006PS0	S5N18008PS0												-	-	-		
2000			S5N20006PD0	S5N20008PD0												-	-	-		

For high performance range (800Vac), please consult the corresponding full details.

^{*(1)} Padlockable handle in OFF 0 position. Possibility of unlocking the door in ON I position (with the use of a tool). Door interlock by a padlock in OFF 0 position.

Please indicate in your order the switch code and the handle code, as these both products are managed separately. A standard shaft is included with the handle.

^{*(2)} A standard shaft is included with the external handle.

^{*(3)} To be used as signalling or control contacts – I_e = 16A (resistive loads) 4A (inductive loads) at 250 Vac. Whilst closing, it switches after the main contacts. Whilst opening, it switches before the main contacts.

^{*(4)} Handle interlock in OFF 0 position by means of a key, that only can be removed when the handle is unlocked. Interlocking in other positions available upon request.

^{*(5)} One set or one unit for input or output. Terminals shrouds for **S5M** or **S5N** only for frontal switch. These accessories aren't compatible with each other.

^{*(e1)} All these codes are related to the new handle , in case of replacements for old design handles, please consult.