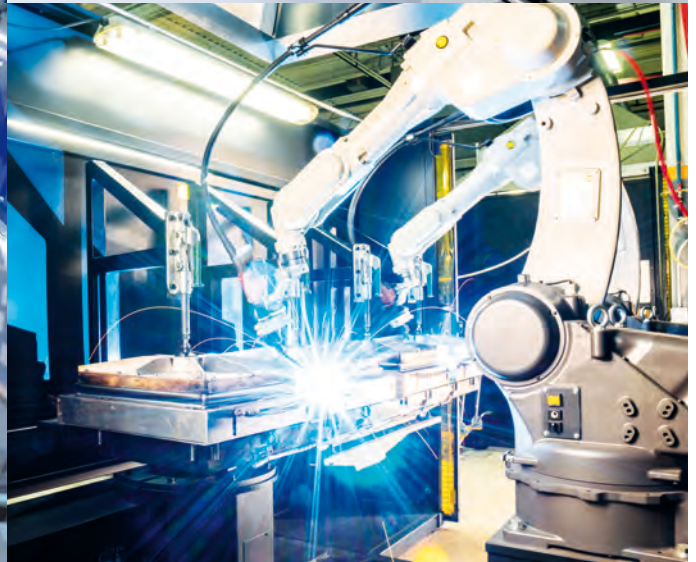
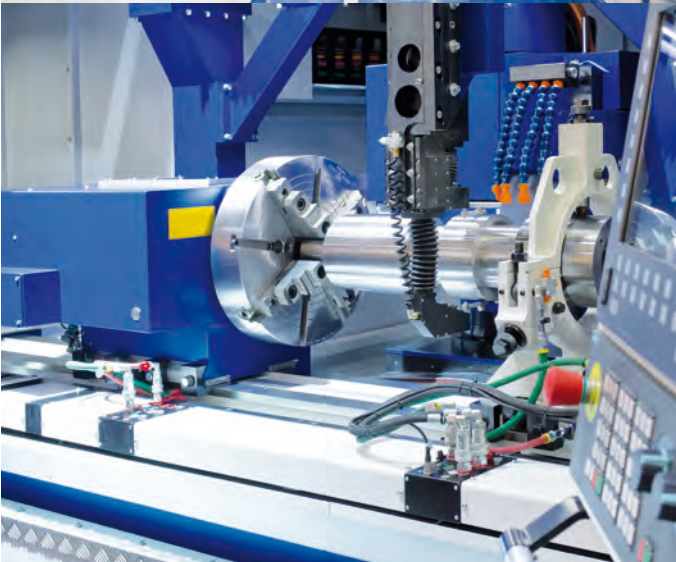
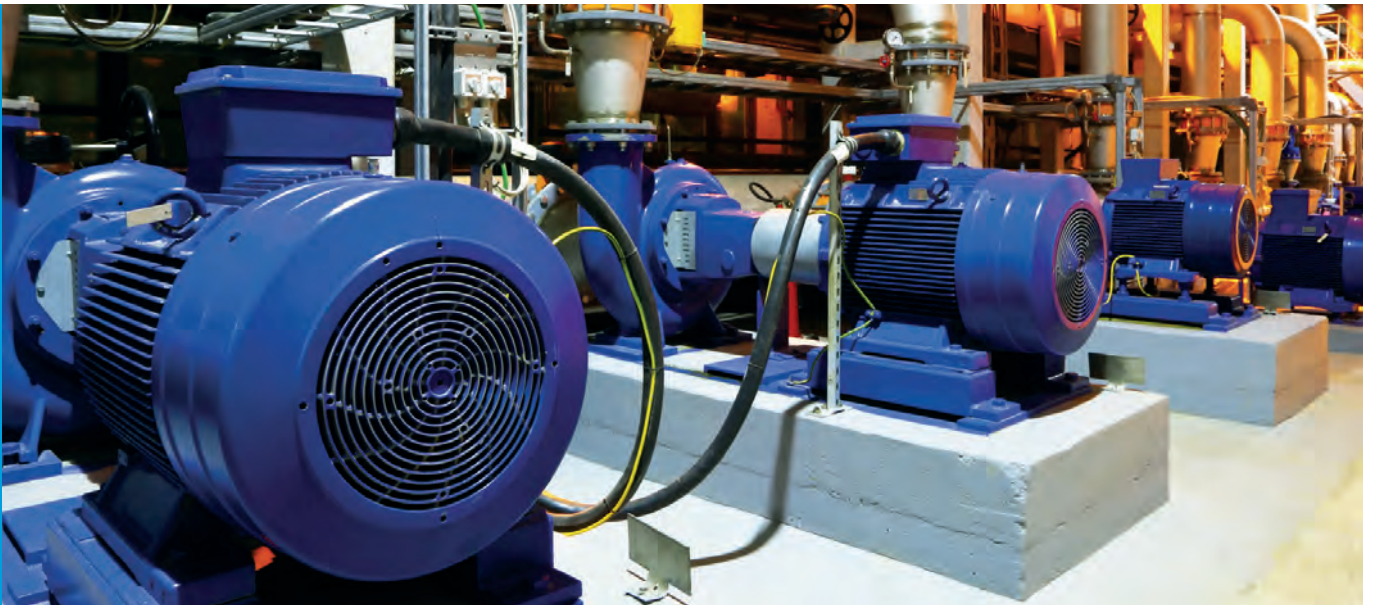


Jacob

MACHINES, ROBOTS, JACOB.

CABLE GLANDS AND MORE
FOR INDUSTRY.

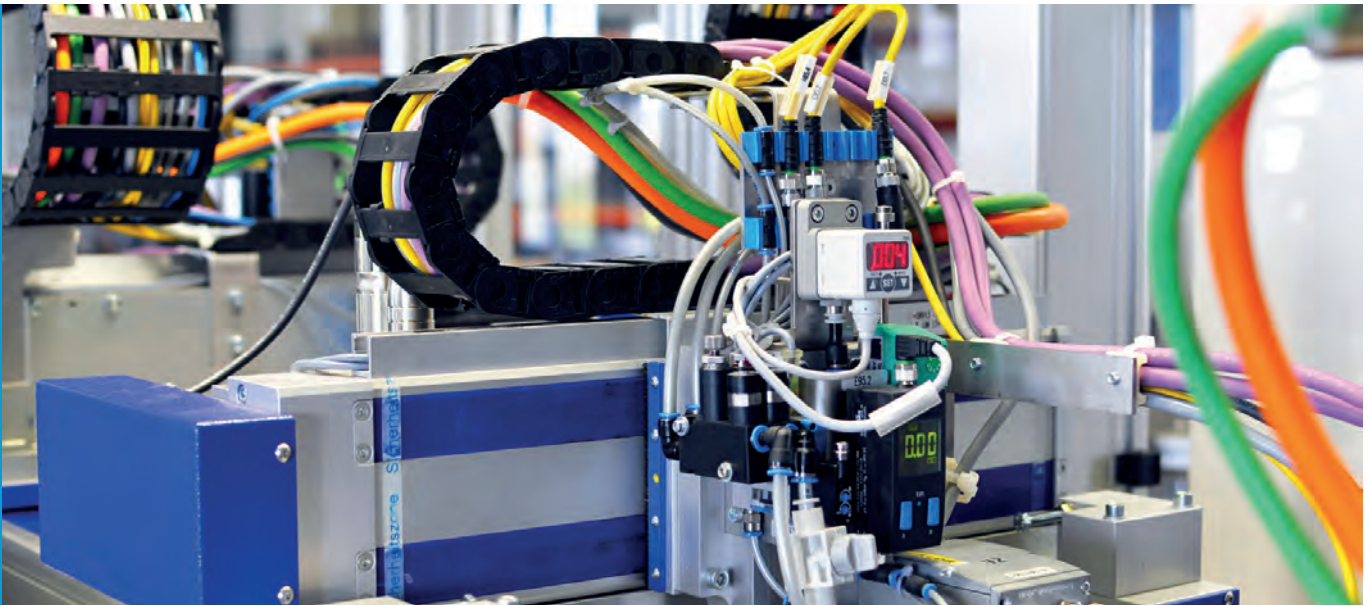




IN ALL INDUSTRIAL SECTORS WHERE YOU NEED THAT BIT EXTRA.

Whether in mechanical and plant engineering, in robots and cable carriers or in other industrial applications, complex cabling solutions form the central nervous system of the industry. As would be expected, high requirements are placed on the quality of the products used. If one component were to fail, the entire production line could come to a standstill and result in millions worth of losses.

The cable glands used in factory automation, for example, must do more than just secure, center, hermetically seal and optimally relieve the cable. Depending on the application, they need to stand up to extreme bending and rotational movements, as well as other mechanical, chemical and thermal stresses.



SPECIALLY DESIGNED FOR MACHINES AND SYSTEMS: CABLE ENTRY PLATE F305-9240-ZZ.

The efficient solution for tool-free entry of cables, wires, hoses, pneumatic and hydraulic lines.

Construction:

Flange frame: Polyamide PA6 V-2
 Elastomeric plate: EPDM complies with the following automotive standards: VW 2.8.1 G50, DBL 5556.10; DBL 5556.20; DBL 5556.21; ozone-resistant as per DIN 53509, level 0 (best level)
 Seal: TPE

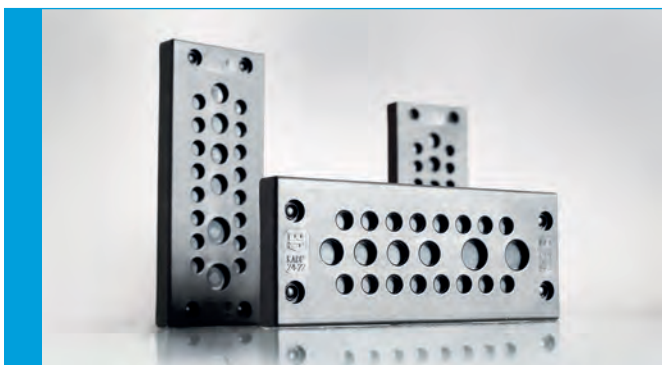
Properties:

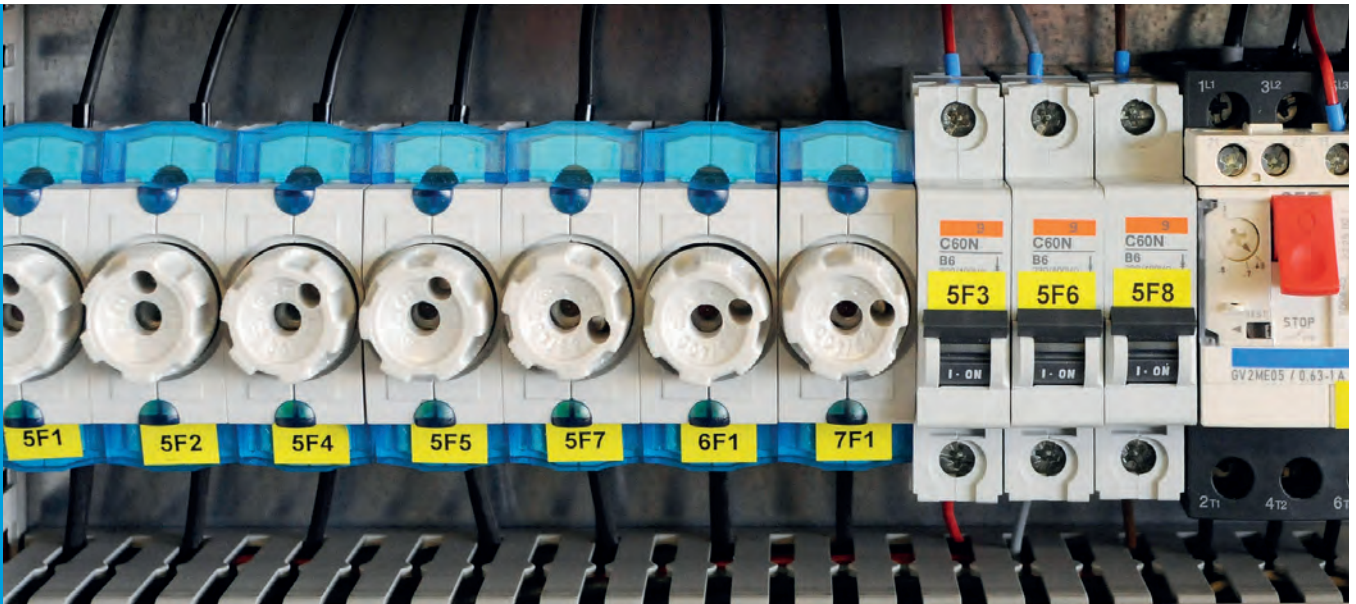
- quick installation up to 10 times faster compared to using cable glands, saves over 50% of space
- trouble-free installation and removal from one side
- mounting in plate thicknesses of 1.5 to 2.0 mm, on size 24 panel cut-outs for industrial connectors (e.g. Harting or Wieland). For plate thicknesses of over 2.0 mm, the cable entry plate can be attached

Temperature range: -30 °C / +100 °C

Outer dimensions: L = 147.5 mm, L1 = 59.5 mm
 H = 25.0 mm, H1 = 8.2 mm

Accessories available upon request





JDAE VENTING ELEMENT FOR ELECTRICAL AND ELECTRONICS HOUSINGS.

For constant ventilation of hermetically sealed electrical and electronics housings exposed to high temperature, pressure and humidity fluctuations.

Construction:

Body: Stainless steel 1.4305
 Membrane: Polyethersulfone PES
 Sleeve: Stainless steel 1.4305
 O-ring: Nitrile rubber NBR
 Connecting thread: Metric, as per EN 60423

Properties:

- protects against build-up of condensation in hermetically sealed electrical and electronic housings caused by temperature and pressure fluctuations
- constant ventilation and adjustment of internal pressure
- PES membrane resists water and oil

Air flow: > 400 ml/min/cm² at $\Delta p = 0.07$ bar
 Water entry pressure: ≥ 0.83 bar
 (dynamic WEP, 30 seconds)
 Temperature range: -40 °C / +100 °C
 Protection grade: IP66 / IP68 - 0.6 bar (60 min.),
 IP69K pending





THE SPECIALIST FOR SPECIAL REQUIREMENTS IN INDUSTRIAL AUTOMATION.

Our cable glands and cable entry systems are used in countless industrial applications. Whether it is mechanical and systems engineering, robotics or measurement and control engineering, they ensure reliable, safe and compliant connections that withstand high mechanical, dynamic, thermal and chemical stresses.

They are produced in brass, stainless steel and plastic. Our cable entry plate F305-9240-zz in particular is an innovative, tool-free piece of connection technology for cabling in machines and systems. It enables installation up to 10 times faster compared to using cable glands and saves over 50% of the space.

Our application engineers will advise and accompany you when selecting the right products with regards to approval and technical requirements. We also conduct installation and user training on site upon request.



THE BEST CONNECTIONS AND MORE.

JACOB GmbH, a family company founded in 1922 with its headquarters in Kernen-Rommelshausen near Stuttgart, employs around 200 people. With its efficient production technology, JACOB manufactures robust cable glands that are suitable for use even in extreme conditions and at extreme temperatures.

The second core business area of the company is the manufacture of level measurement technology such as floating switches, readers and level gauges. It serves customers from the energy sector, mechanical and automotive engineering, the electrical industry and apparatus and control cabinet construction. In addition to its standard product lines, Jacob also offers customer-specific solutions. The product portfolio includes components for potentially explosive areas, VDE-approved cable glands for use in Europe and UL-approved versions for the US market. An international sales and service network guarantees excellent customer care on site.

JACOB GMBH
ELEKTROTECHNISCHE FABRIK

Gottlieb-Daimler-Straße 11

D-71394 Kernen

phone +49 (0) 7151 4011-0

fax +49 (0) 7151 4011-49

E-mail: jacob@jacob-gmbh.de

www.jacob-gmbh.de