

EML 16

DATA CONCENTRATOR

The data concentrator EML-16 provides a function of collected pulses and an interface to supervisory systems. The EML-16 can be applied as a tool for counting of consumption of energy meters, water, gas, heat, etc.. It supports RS485 communication and TCP/IP communication.



TECHNICAL CHARACTERISTICS EML 16

AUXILIARY SUPPLY	
Rated voltage Us	90 ÷ 260 VAC/CC 20 ÷ 60 VAC/CC
Operating limits	±15%
Power consumption	4,5VA
Frequency	50 - 60 Hz
COUNTER INPUTS	
Number of inputs	16
Voltage presents on the inputs	24 - 48 - 115 - 230 VAC/CC
Current input	5mA max
Type of inputs filter	Digitale
RS485 SERIAL INTERFACE	
Baud-rate	Programmable 1200 - 115200 bps
Protocol supported	Modbus RTU
ETHERNET INTERFACE	
Network interface	RJ45 Ethernet 10BASE-T o 100BASE-T (auto-sensing)
Protocols supported	HTTP, Modbus TCP/IP
INSULATION	
Insulation voltage	2,5kVAC for 1 minute
AMBIENT CONDITION	
Operating temperature	0...+60°C
Storage temperature	-20...+80°C
HOUSING	
Version	6 module
Degree of protection	IP52 on front IP20 Housing and terminals
Weight	500 g
CERTIFICATIONS AND COMPLIANCE	
Reference standards	EN50082-1, EN50082-2, EMC 89/336/EEC

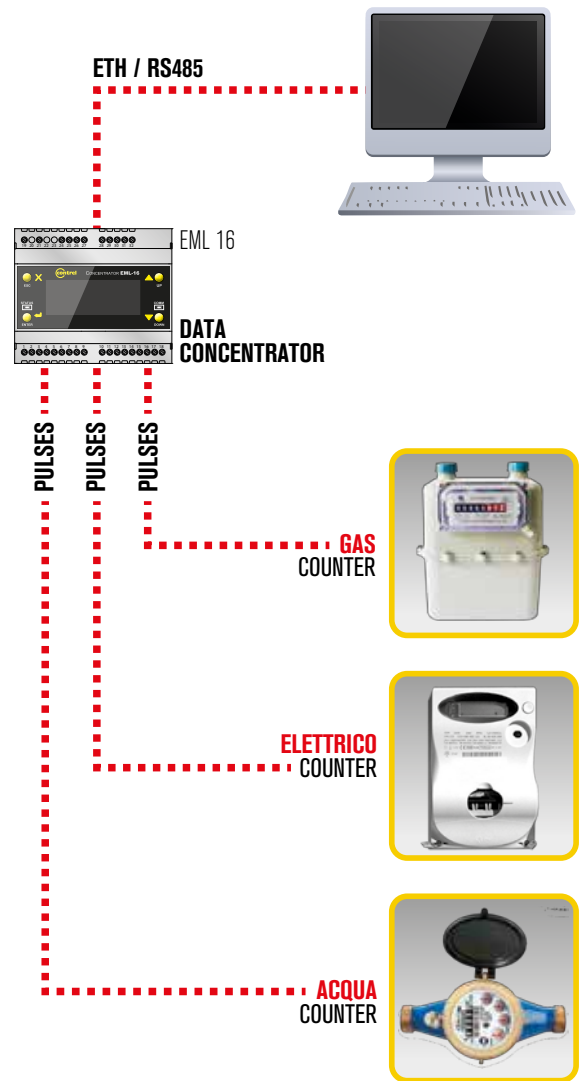
OPTIONS

ORDER CODE	DESCRIPTION
C1	20 ÷ 60 VAC/CC
24	Input voltage 24VAC/CC
48	Input voltage 48VAC/CC
115	Input voltage 115VAC/CC
230	Input voltage 230VAC/CC

COMMUNICATION PORTS

485	RS485 serial interface
ETH	Ethernet interface with Web server function

WIRING DIAGRAMS EML 16



MECHANICAL DIMENSIONS EML 16

