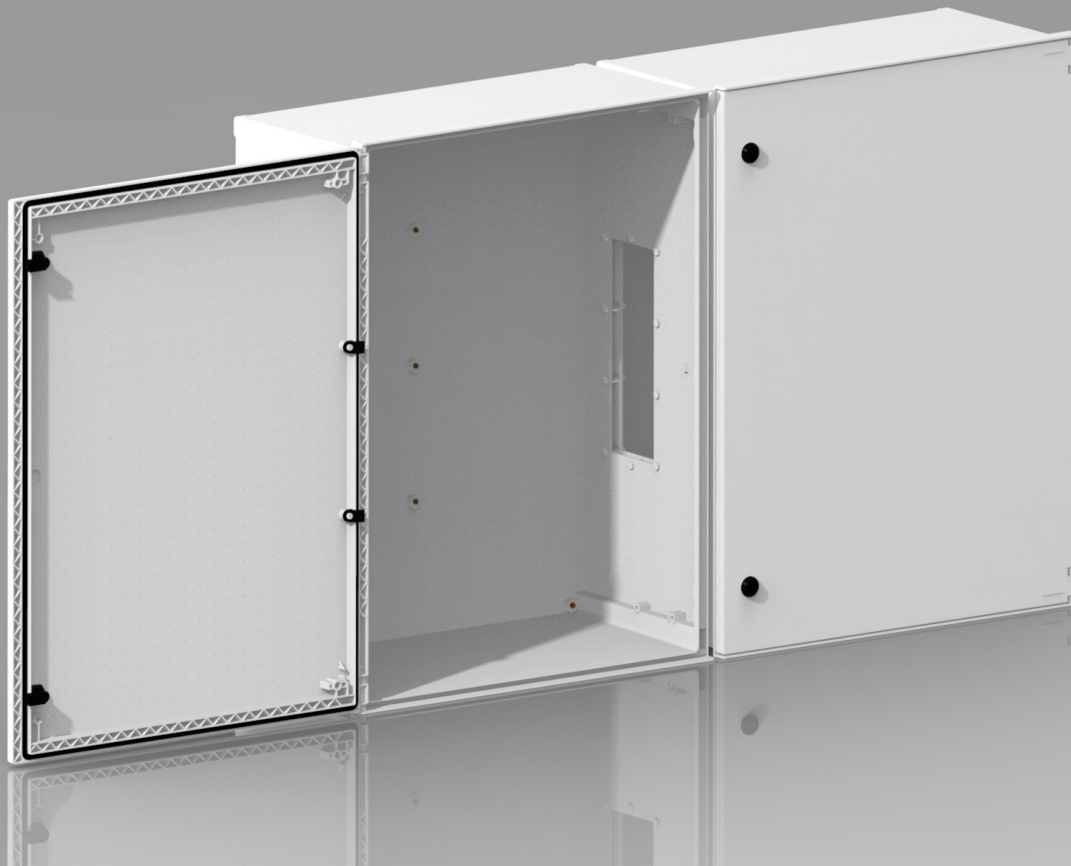




INDUSTRIAL IP66 CABINET

BRES-812-2P

Cabinet with 2 doors 800x1200x300 mm



Safybox BRES

Enclosures made of hot-moulded glass-fibre reinforced polyester, light grey RAL 7035.

Self-extinguishing material, glow wire 960 °C tested according to IEC 60695-2-11.

Degree of protection IP66 according to IEC 60529.

Impact resistance IK10 according to IEC 62262 with a new door design for increased rigidity.

Thermal class F according to IEC 60085. Non-hygroscopic material. Double insulated. Rated voltage up to 1500 Vdc.

Use of better quality materials than the competition to achieve the lowest weight and best performance.

Non-metallic hinges, anti-pinch wedges, optional triple locking, direct wall fastening.

Rain protection visor, reinforced doors with zig-zag ribbing, possibility of joining enclosures with flanges while maintaining IP rating.





INDUSTRIAL IP66 CABINET

BRES-8 1 2-2P

Cabinet with 2 doors 800x1200x300 mm

Height	800 mm
Width	1200 mm
Depth	300 mm
Weight	22,50 kg
Material	Glass-fibre reinforced polyester
Colour	RAL 7035
Number of locks	4
Type of locks	Double-bar lock
Transparent window	No
Degree of protection IP according to IEC 60529	IP66
Degree of protection IK according to IEC 62262	IK10
Fire resistance in accordance with IEC 60695-2-11	960 °C
Ambient operating temperature	-30 to 85 °C
Maximum load	63 kg
Electrical insulation class	F
Rated AC voltage	1000 Vac
Rated DC voltage	1500 Vdc
Units per packaging	1
Units per pallet (1200 x 800 mm)	6
Indoor/outdoor installation	Yes / Yes
Flush-mounted	Yes
Wall mounted installation	Yes
Floor installation	Yes (additional socket required)
Pole mounted installation	Yes (additional bracket required)
Modular	Yes (connecting flanges required)
-	-



SAFYBOX
URIARTE GROUP