



Aggiornamento Tecnico



Product Updates



WITH THE HEAD, THE HEART, AND THE PASSION OF ALL TIME



New E COR range – Wall-mounting boxes
manufactured from mild steel material



New range of E COR Wall-mounting boxes

GOAL

To offer Business partners a new range of wall-mounting boxes in DC01 sheet steel featured by innovative characteristics and flexibility.

SOLUTION

A box manufactured with the criteria of Industry 4.0, able to offer dedicated solutions tailored to your needs.



Overview of Wall-mounting solutions

ST

OLD



e cor
Fe

NEW



e cor
STAINLESS STEEL



eta





E COR wall-mounting solutions (mild steel and stainless steel)



Download the «E COR» catalogue in .pdf format for the new E COR range manufactured in mild steel / General catalogue Release 21 in .pdf format for the E COR range manufactured in stainless steel – www.eta.it
DOWNLOAD / INDUSTRIAL
AUTOMATION

e cor
Fe



e cor
INOX



eta





Compatibility with ST range



Dimensions and plate fixing hole centre distances unchanged



External enclosure dimensions unchanged



Wall mounting hole centre distances unchanged



E COR Dimensions



STANDARD: from 200 x 300 x 150 to 1200 x 1200 x 300



CUSTOM: from 300 x 300 x 120 to 800 x 1200 x 300 with production “to the millimetre” (maximum depth. 350: 600 x 1000 x 350) with metric or imperial units of measure





BENEFITS of the range



Side-by-side Mounting with simultaneous opening of the adjacent doors



Increased interior capacity thanks to the additional 7 mm in depth



Trilobular M5 mounting screws



New short arc welding technology for stud bolts



eta





BENEFITS of the range



Enclosure

- ✘ Structured fold with an 80° inclination for greater structural rigidity
- ✘ New wall mounting system with expansion nut and easy fastening from the outside the box



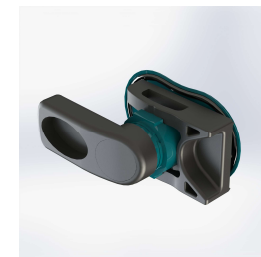
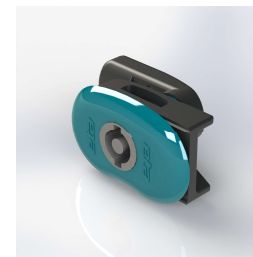
Door

- ✘ Reversible front door with welded reinforcement profiles
- ✘ Transparent door supplied in tempered glass
- ✘ New concept and shape for pressed steel hinges
- ✘ New design for 180° hinges; possibility of installation without machining the door



Locking system

- ✘ Locking system with quick installation, 1/4 turn and metal insert
- ✘ Available in ocean blue RAL 5020 with ETA logo (standard) or black with ETA logo
- ✘ Available version with keylock
- ✘ On request: RAL 5020 without logo, black without logo



eta





BENEFITS of the range



Mounting plate

- ⊗ Rapid Plate installation thanks to the slotted plate design and stud bolts with integrated spacers
- ⊗ Markings (removable with appropriate product) to facilitate wiring



Cable entry

- ⊗ Enlarged opening and non funnel-shaped cable entry
- ⊗ Four dimensions
- ⊗ Double cable entry for $W \geq 600$ mm
- ⊗ Bordered flange, fitted with a polyurethane gasket (lower total flange + screw protrusion than previous version)
- ⊗ Conductive earth flange with single screw (identified with marking)
- ⊗ Engravings to the mounting plate to assist the user with mounting plate sizing information



Accessories

- ⊗ Wiring support, creation of an internal structure and depth adjustment of the accessories at 25 mm intervals thanks to the universal cross-pieces (with front fastening to the universal brackets)
- ⊗ Protective canopy compatible with pole mounting, easy to install thanks to the new concept












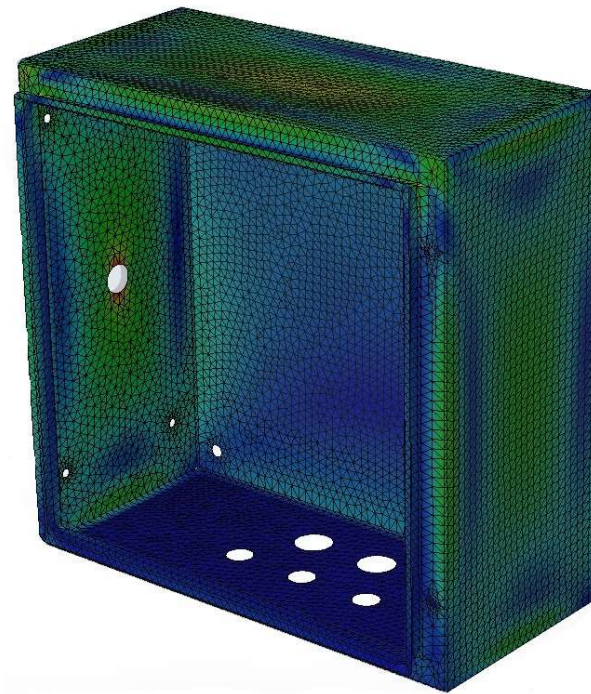
eta





Customization

-  Type and colour of the finishing: textured, smooth, polyester, epoxy-polyester, RAL, ANSI, MUNSELL
-  Special finishing cycles: specific powder coatings for outdoor applications, increased thicknesses, double colour (inside/outside)
-  Machining and Louvres
-  Studs
-  Assembly of accessories
-  Silicone gasket
-  Thermal calculation
-  Ad hoc special projects
-  Solutions with Seismic Design





A new system of part numbers

**Enclosure with standard dimensions
as per the catalogue**

EC030415.P.0001

EC range of the E COR product

03 width

04 height

15 depth

.P possible product version

.0001

possible progressive number identifying
the special processing for the customer
(generated by ETA upon order confirmation)

**Enclosure with special dimensions
not included in the catalogue
(code generated by ETA)**

EC.00100.P.0001

EC range of the E COR product

.00100 progressive number
identifying the special dimensions for the customer
(generated by ETA upon order confirmation)

.P possible product version
(generated by ETA upon order confirmation)

.0001 progressive number
identifying the special processing for the customer
(generated by ETA upon order confirmation)



Protection rating and approvals



Protection rating:

With single blank door:



Nema 4



With double blank door:



Nema 12



With glazed door:



Nema 12



Approvals:



Download the Declaration of conformity in .pdf format -
DECLARATIONS OF CONFORMITY



2D and 3D drawings



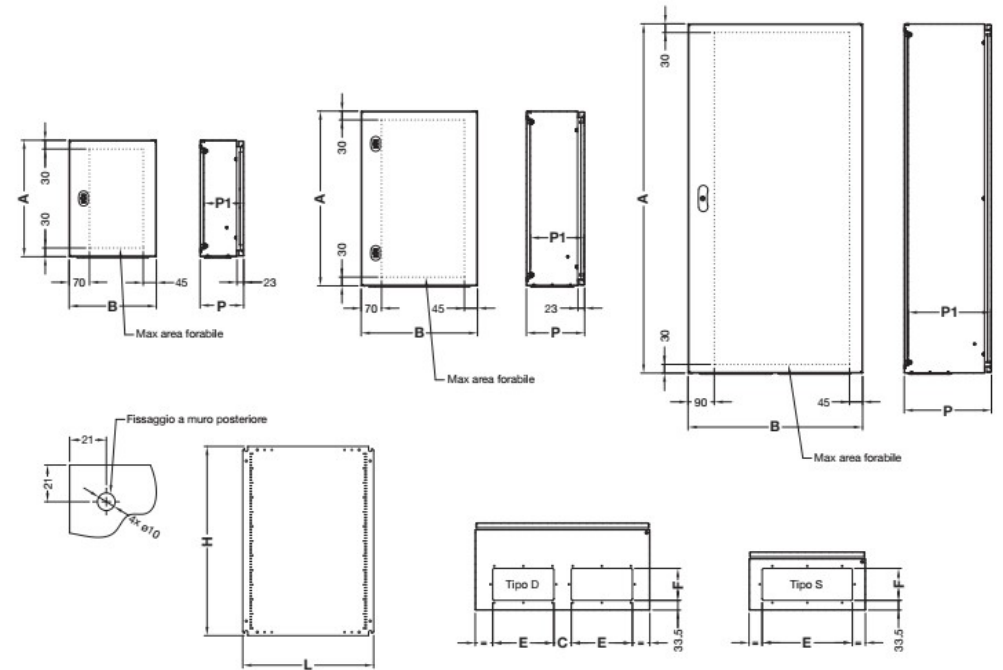
To add ETA boxes into your Technical Project



Download the 2D drawings in .dwg/.dxf/.pdf format – DRAWINGS / E COR / DWG – DXF – PDF



Download the 3D drawings in .step format – DRAWINGS / E COR / 3D STEP / different folders according to product range





Assembly Instructions



Do you need help to assemble your accessories or have you lost the instructions? No problem, they are available online!



Download the assembly instructions in .pdf format –
DRAWINGS / E COR /
ASSEMBLY INSTRUCTIONS

Pos.	Nr. cod.	Descrizione	Q.ty
1	0VITP5510T	Vite trilobata TPS TORX M5x10	8

Avvitare per ultima
Screw at the last
M5 TX25 2Nm

eta

Prodotto e Prodotto in Italia
E.COR
Descrizione: Schema mont. ingresso cavi singolo
Disegnato: EC
Disegnato in: 07/08/99
Assemblato: Assembly instr. single cable entry
Disegnato in: 07/08/99
Disegnato da: 1 1
Disegnato da: AA

Revisione PDF / PDF update in standard A PDF L'ETICHETTA E COR V SCHEMI DI MONTAGGIO E ISTRUZIONI DI ASSEMBLAGGIO E ASSEMBLAGGIO ISTRUZIONI PDF



Packaging and ETA logo



ETA packaging in green 369C colour with all-over logo printing



Locking system with ETA logo to guarantee brand identification





Promotion



ADV that can be modified according to the format



Low-resolution and high-resolution pictures available for creating promotional contents and press release



Download the pictures in .jpg format 72dpi and 300dpi – PICTURES / INDUSTRIAL AUTOMATION / E COR





Stock availability



The new E COR range in mild steel material will be available starting from September 2020, in pre-order from July 2020.



Our team is available for a dedicated presentation and a technical meeting focused on the availability of ST boxes, the conversion of existing projects from ST to E COR and the management of the new stock.

Thank you

www.eta.it

marketing@eta.it



innovative
enclosure solutions
for industrial & electronic
applications